

EPIC® MH Gigabit Modul

The mixed assembly guarantees high flexibility. For applications in machine and plant engineering, for robotics and slide-in technology.

EPIC® MH Gigabit Modul

Info

Modular connector system, mateable with the market standard Gigabit module for Ethernet data rates up to 10 GBit/s, Cat. 7



Supplementary automation components from Lapp



Mechanical and plant engineering



Rail



Wind Energy

Benefits

Gigabit module, all around shielded, 4 pair of wires, in conjunction with Cat.7 CU cables, a transmission rate up to max. 10 GBit/s (according IEEE 802.3) is achieved

EPIC® MH system is mateable with the market standard

The mix of different functions in one plug guarantees high flexibility

Railway applications

- Fire protection on railway vehicles: Test according EN 45545-2. Requirement sets R22 and R23. Hazard level HL1, HL2 and HL3

Application range

Industrial machinery and plant engineering

Industry 4.0 applications

Robotics industry

Renewable energy

Railway applications / vehicle construction

Last Update (22.08.2025)

©2025 Lapp Group - Technical changes reserved

Product Management www.lappkabel.de

You can find the current technical data in the corresponding data sheet.

PN 0456 / 02_03.16

EPIC® MH Gigabit Modul

Technical Data

Classification ETIM 5:	ETIM 5.0 Class-ID: EC002641 ETIM 5.0 Class-Description: Modular connector
Rated voltage (V):	50
Rated impulse voltage:	0,8 kV
Rated current (A):	5
Pollution degree:	3
Flammability:	UL94 V-0
Number of contacts:	8 + 0 + PE
Material:	PA Polyamid Zinc die-cast
Cycle of mechanical operation:	500
VDE-tested:	UL-tested: UL File Number: E75770
Temperature range:	-40°C to +125°C

Note

Photographs and graphics are not to scale and do not represent detailed images of the respective products. Prices are net prices without VAT and surcharges. Sale to business customers only.

EPIC® MH Gigabit Modul

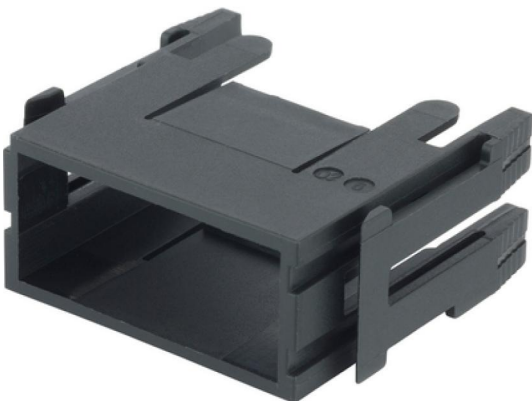
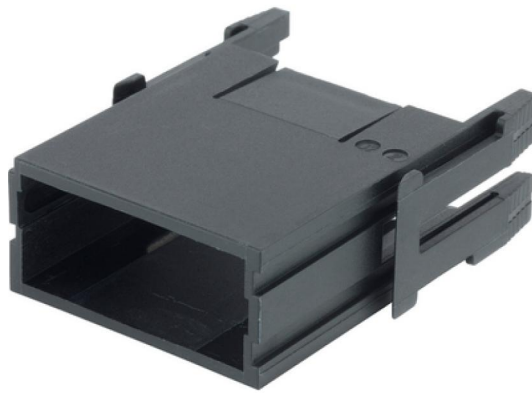
Article number	Article description	Contact type	Slots	Pieces / PU
EPIC® MH Gigabit Kit				
44423291	EPIC® MHS Gigabit Kit small, AWG 24 - 28, cable diameter 5-7mm	male	1	1
44423292	EPIC® MHB Gigabit Kit small, AWG 24 - 28, cable diameter 5-7mm	female	1	1
EPIC® MH Gigabit Insulating body				
44423276	EPIC® MHS Gigabit	male	1	10
44423277	EPIC® MHB Gigabit	female	1	10
EPIC® MH Gigabit contact body metal				
44423278	EPIC® MHS Gigabit PIN	male	-	10
44423279	EPIC® MHS Gigabit PIN + GND	male	-	10
44423280	EPIC® MHB Gigabit PIN	female	-	10
44423281	EPIC® MHB Gigabit PIN + GND	female	-	10
EPIC® MH Gigabit cable clamp				
44423282	EPIC® MH Clamp 5 - 7 mm	-	-	10
44423283	EPIC® MH Clamp 7 - 10 mm	-	-	10
44423284	EPIC® MH Clamp 10 - 12 mm	-	-	10

Last Update (22.08.2025)

©2025 Lapp Group - Technical changes reserved

 Product Management www.lappkabel.de

 You can find the current technical data in the corresponding data sheet.
 PN 0456 / 02_03_16

EPIC® MH Gigabit Modul

Last Update (22.08.2025)

©2025 Lapp Group - Technical changes reserved

Product Management www.lappkabel.de

You can find the current technical data in the corresponding data sheet.

PN 0456 / 02_03.16