

EPIC® MH 2 100A

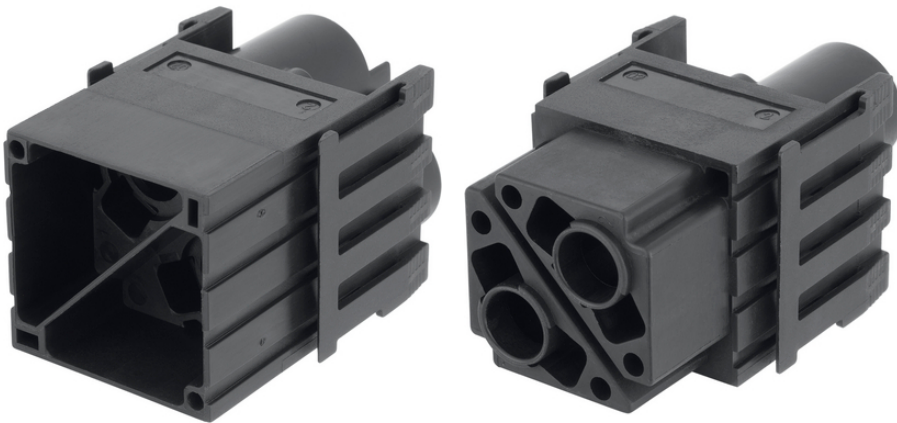
High flexibility by the use of any combination of inserts in one connector

High power module 2pole for compact power transmission

Info

Modular connector system, plugable with the market standard

High power module 2pole for compact power transmission



Supplementary automation components from Lapp



Mechanical and plant engineering



Rail



Wind Energy



Flame-retardant



Voltage

Benefits

High power module 2pole for compact power transmission

Crimp connection for permanent vibration proof contacting

EPIC® MH system is mateable with the market standard

The mix of different functions in one plug guarantees high flexibility

Railway applications

- Fire protection on railway vehicles: Test according to EN 45545-2. Requirement sets R22 and R23. Hazard level HL1, HL2 and HL3

Application range

Last Update (30.12.2024)

©2024 Lapp Group - Technical changes reserved

Product Management www.lappkabel.de

You can find the current technical data in the corresponding data sheet.

PN 0456 / 02_03.16

EPIC® MH 2 100A

Mechanical engineering
Robotics industry
Plant engineering
Renewable energy
Railway applications / vehicle construction

Technical Data

Classification ETIM 5:	ETIM 5.0 Class-ID: EC002641 ETIM 5.0 Class-Description: Modular connector (industrial connector)
Classification ETIM 6:	ETIM 6.0 Class-ID: EC002641 ETIM 6.0 Class-Description: Modular connector (industrial connector)
Rated voltage (V):	1000 V
Rated impulse voltage:	8 kV
Rated current (A):	100 A
Pollution degree:	3
Flammability:	UL94 V-0
Contact resistance:	< 5 mOhm
Number of contacts:	2
Termination methods:	Crimp termination: 0.75 mm ² ... 4.0 mm ²
Material:	Polyamide, glass fibre-reinforced
Cycle of mechanical operation:	500
Certifications:	UL-tested: UL File Number: E75770
Temperature range:	-40°C to +125°C

Note

Photographs and graphics are not to scale and do not represent detailed images of the respective products.
Prices are net prices without VAT and surcharges. Sale to business customers only.



EPIC® MH 2 100A

Article number	Article description	Contact type	Number of operating contacts	Slots	Packaging unit
44423212	EPIC® MHS 2 CM 100A	male	2	2	10
44423213	EPIC® MHB 2 CM	female	2	2	10

Last Update (30.12.2024)

©2024 Lapp Group - Technical changes reserved

Product Management www.lappkabel.de

You can find the current technical data in the corresponding data sheet.

PN 0456 / 02_03_16