

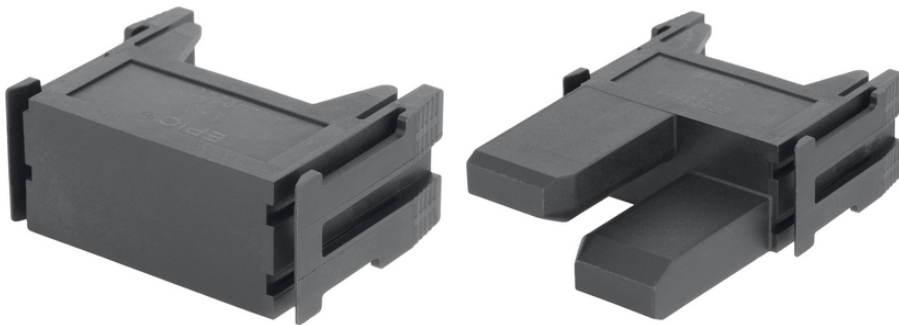
EPIC® MH 0 blind modul

High flexibility by the use of any combination of inserts in one connector

Info

Modular connector system, plugable with the market standard

Dummy module as a placeholder for future expansion



Supplementary automation components from Lapp



Mechanical and plant engineering



Rail



Wind Energy



Flame-retardant

Benefits

Dummy module as a placeholder for future expansion

EPIC® MH system is mateable with the market standard

"Z" version with centering function for plug in technique

The mix of different functions in one plug guarantees high flexibility

Railway applications

- Fire protection on railway vehicles: Test according EN 45545-2. Requirement sets R22 and R23. Hazard level HL1, HL2 and HL3

Application range

Mechanical engineering

Robotics industry

Plant engineering

Renewable energy

Railway applications / vehicle construction

Last Update (25.12.2024)

©2024 Lapp Group - Technical changes reserved

Product Management www.lappkabel.de

You can find the current technical data in the corresponding data sheet.

PN 0456 / 02_03.16

EPIC® MH 0 blind modul

Technical Data

Classification ETIM 5:

ETIM 5.0 Class-ID: EC002641

ETIM 5.0 Class-Description: Modular connector (industrial connector)

Classification ETIM 6:

ETIM 6.0 Class-ID: EC002641

ETIM 6.0 Class-Description: Modular connector (industrial connector)

Material:

Polyamide, glass fibre-reinforced

Temperature range:

-40°C to +125°C

Note

Photographs and graphics are not to scale and do not represent detailed images of the respective products. Prices are net prices without VAT and surcharges. Sale to business customers only.



EPIC® MH 0 blind modul

Article number	Article description	Slots	Packaging unit
EPIC® MH 0 blind modul			
44423232	EPIC® MH 0	1	10
EPIC® MH 0 blind modul with centering			
44423233	EPIC® MH 0 Z	1	10

Last Update (25.12.2024)

©2024 Lapp Group - Technical changes reserved

Product Management www.lappkabel.de

You can find the current technical data in the corresponding data sheet.

PN 0456 / 02_03_16